



WK740

Men's multi-pocket work trousers

60% cotton / 40% polyester. Twill fabric. Wash at 60°C. Straight fit. 2 front pockets (bags made of the main material). 1 pocket with flaps and velcro fastening on the left when worn, 1 double open tool pocket on the right when worn, 2 back patch pockets, 2 knee pad pockets in matching colour with velcro and flap inside to support and adapt the knee pad. Waistband partially elasticated with loops. Zip and button fastening. Plastic button. Crotch gusset for increased resistance and perfect freedom of movement. Twin-needle stitching on side seams, triple stitching on gusset and front + back crotch seams. Knee pad not provided. Ribbed overstitched crotch. Leg hems. Detachable brand label.



26 UK (36 FR) 28 UK (38 FR) 30 UK (40 FR) 32 UK (42 FR) 34 UK (44 FR) 36



More information

Logistic



1



15



PK - Pakistan

Customs code



62034211

Washing instructions



Also available in version



WK741

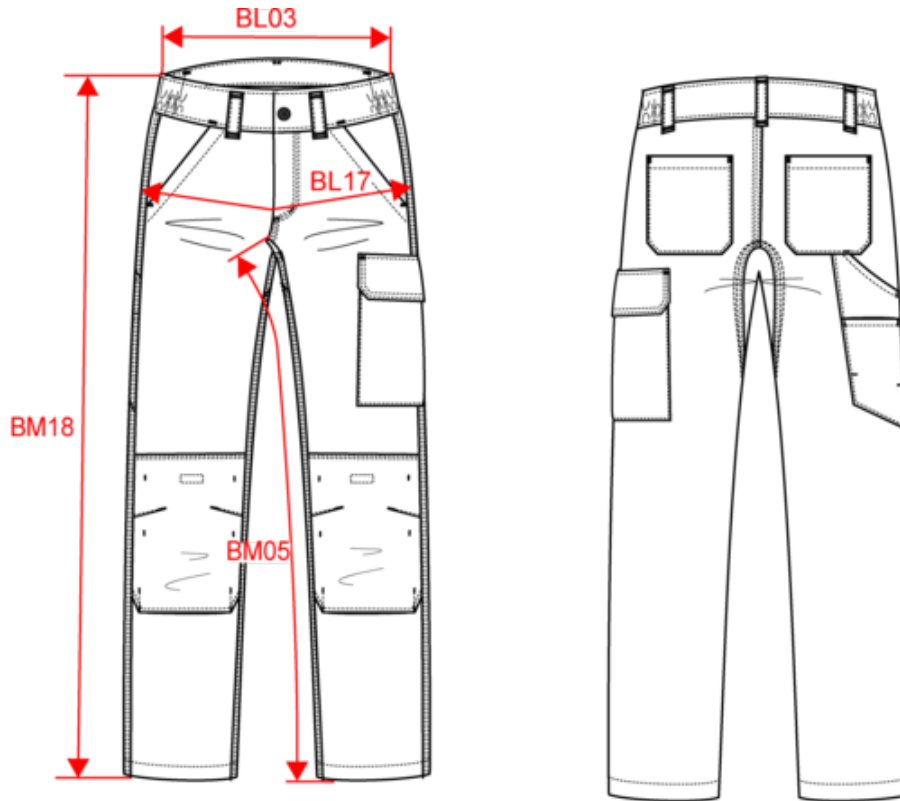


46 U

WK740

Men's multi-pocket work trousers

Dimensions (cm)





Measurements in cm	36	38	40	42	44	46	48	50	52	54	56	58
BL03 - 1/2 elasticated waist width relaxed (front over back)	38.00	40.00	42.00	44.00	46.00	48.50	51.00	53.50	56.00	58.50	61.00	63.50
BL17 - 1/2 hip width (measured parallel to waistband)	49.00	51.00	53.00	55.00	57.00	59.00	61.00	63.00	65.00	67.00	69.00	71.00
BM05 - Inseam length	82.00	82.00	82.00	82.00	82.00	82.00	82.00	82.00	82.00	82.00	82.00	82.00
BM18 - Side length (waistband included)	105.00	105.50	106.00	106.50	107.00	107.50	108.00	108.50	109.00	109.50	110.00	110.50



WK740

Men's multi-pocket work trousers

Colours information

Logistic  1  15

Sizes	Width (cm)	Height (cm)	Length (cm)	Net weight (kg)	Gross weight (kg)	Pieces/Box	Pieces/Bundle
-------	------------	-------------	-------------	-----------------	-------------------	------------	---------------

Taille fabricant	Pays-Bas	Italie	Portugal	Espagne	Royaume-Uni	Allemagne
36 FR	42 NL	40 IT	36 PT	36 ES	26 UK	42 DE
38 FR	44 NL	42 IT	38 PT	38 ES	28 UK	44 DE
40 FR	46 NL	44 IT	40 PT	40 ES	30 UK	46 DE
42 FR	48 NL	46 IT	42 PT	42 ES	32 UK	48 DE
44 FR	50 NL	48 IT	44 PT	44 ES	34 UK	50 DE
46 FR	52 NL	50 IT	46 PT	46 ES	36 UK	52 DE
48 FR	54 NL	52 IT	48 PT	48 ES	38 UK	54 DE
50 FR	56 NL	54 IT	50 PT	50 ES	40 UK	56 DE
52 FR	58 NL	56 IT	52 PT	52 ES	42 UK	58 DE
54 FR	60 NL	58 IT	54 PT	54 ES	44 UK	60 DE
56 FR	62 NL	60 IT	56 PT	56 ES	46 UK	62 DE
58 FR	64 NL	62 IT	58 PT	58 ES	48 UK	64 DE